

CORRECTION

Open Access



Correction: Advanced care planning during the COVID-19 pandemic: ceiling of care decisions and their implications for observational data

Sam Straw¹, Melanie McGinlay², Michael Drozd¹, Thomas A. Slater¹, Alice Cowley², Stephe Kamalathasan², Nicholas Maxwell³, Rory A. Bird³, Aaron O. Koshy¹, Milos Prica², Peysh A. Patel², Samuel D. Relton⁴, John Gierula¹, Richard M. Cubbon¹, Mark T. Kearney¹ and Klaus K. Witte^{1*}

Correction: *BMC Palliat Care* 20, 10 (2021)
<https://doi.org/10.1186/s12904-021-00711-8>

observational data. *BMC Palliat Care*. 2021;20:10. <https://doi.org/10.1186/s12904-021-00711-8>.

Following the publication of the original article [1], the author reported that there is was an error in Fig. 1 as the blue and red colours are the wrong way around. The correct Fig. 1 is included here and the original article has been updated.

Author details

¹Leeds Institute of Cardiovascular and Metabolic Medicine, University of Leeds, Leeds, UK. ²Leeds Teaching Hospitals NHS Trust, Leeds, UK. ³School of Medicine, University of Leeds, Leeds, UK. ⁴Leeds Institute of Health Sciences, University of Leeds, Leeds, UK.

Published online: 16 December 2022

Reference

1. Straw S, McGinlay M, Drozd M, et al. Advanced care planning during the COVID-19 pandemic: ceiling of care decisions and their implications for

The original article can be found online at <https://doi.org/10.1186/s12904-021-00711-8>.

*Correspondence: k.k.witte@leeds.ac.uk

¹Leeds Institute of Cardiovascular and Metabolic Medicine, University of Leeds, Leeds, UK

Full list of author information is available at the end of the article



© The Author(s) 2022. **Open Access** This article is licensed under a Creative Commons Attribution 4.0 International License, which permits use, sharing, adaptation, distribution and reproduction in any medium or format, as long as you give appropriate credit to the original author(s) and the source, provide a link to the Creative Commons licence, and indicate if changes were made. The images or other third party material in this article are included in the article's Creative Commons licence, unless indicated otherwise in a credit line to the material. If material is not included in the article's Creative Commons licence and your intended use is not permitted by statutory regulation or exceeds the permitted use, you will need to obtain permission directly from the copyright holder. To view a copy of this licence, visit <http://creativecommons.org/licenses/by/4.0/>. The Creative Commons Public Domain Dedication waiver (<http://creativecommons.org/publicdomain/zero/1.0/>) applies to the data made available in this article, unless otherwise stated in a credit line to the data.

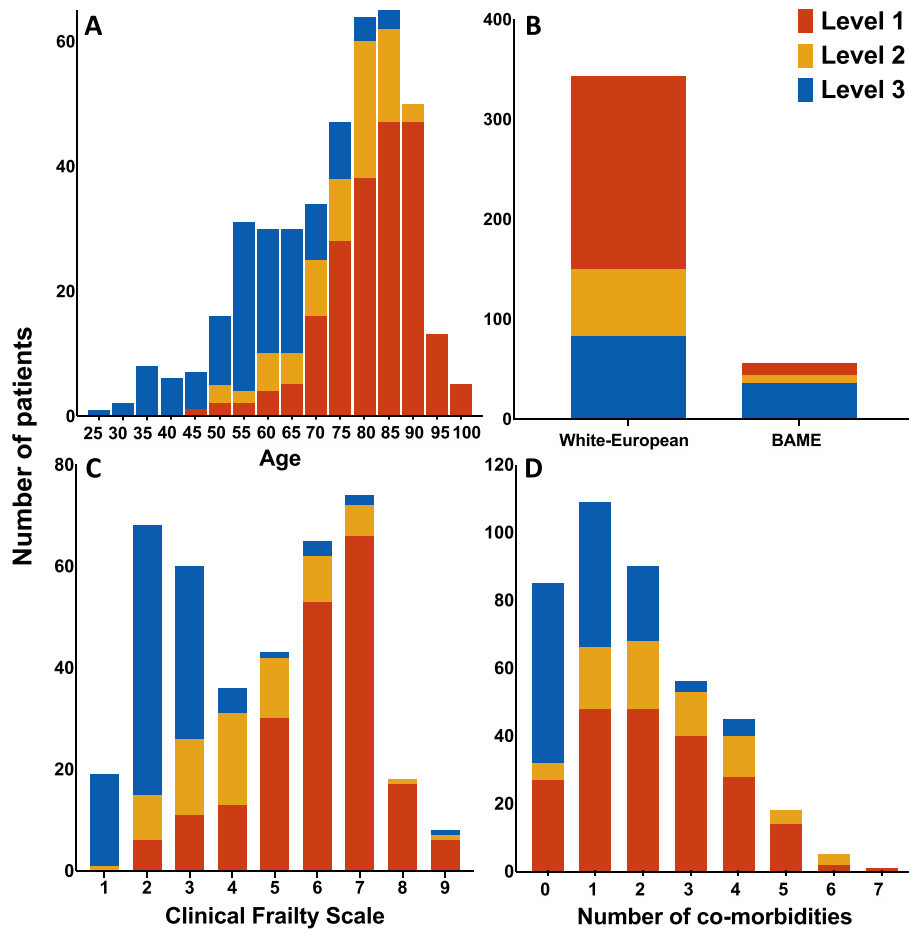


Fig. 1 Bar charts showing **a** age, **b** ethnicity, **c** Clinical Frailty Scale and **d** co-morbidities in patients deemed appropriate for level one, two or three care. Patients in the present study were often elderly, frail and were multi-morbid